

A look inside the tried and true RETRACTA-BELT®



With more than 20 years of use and abuse in airports, we have perfected every detail of the **RETRACTA-BELT®** and engineered the highest quality product on the market. The **RETRACTA-BELT®** will outperform any 'competitors' product with its advanced technology and superior construction. We include all of the industry leading features standard, so you can be sure the **RETRACTA-BELT®** is the best choice for safety, security and reliability for years to come.

Threaded brass plug for easy sign frame attachment. No adapter necessary.

All stainless steel hardware eliminates rust potential.

Precision spring tested to more than 100,000 cycles to ensure performance for a lifetime.

High impact polycarbonate material eliminates breakage from customer abuse. It's the same material used in bulletproof panels. Competitor's plastic can easily crack from customer wear and tear.

Revolutionary EZ Back® Brake

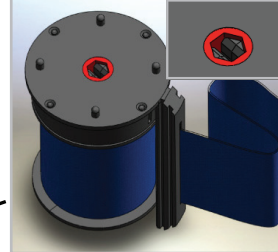
- ▶ Safest, slowest retraction
- ▶ Rotary damper technology ensures a quiet, controlled belt retraction at any length.
- ▶ Rated 250,000+ cycles
- ▶ Competitors either don't have brakes or use low-grade centrifugal motion pads that can wear over time and only function when the belt is fully extended.

Our heavy wall tubes are made of quality steel, rust-proof aluminum, grade 304 rust-resistant stainless steel, solid brass or premium PVC. They're up to 50% heavier than competitors thin-walled and low-grade steel, or inferior 201 stainless steel that can rust and dent easily.

Additional Features

- ▶ Best warranty on the market (10 years).
- ▶ All parts are easily replaceable.

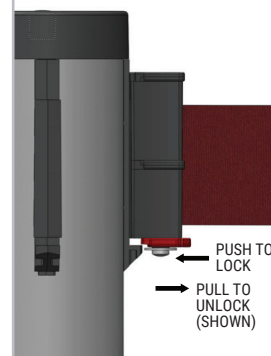
Hex Drive Spool / Spring



- ▶ Increases lifespan of the overall product.
- ▶ New hex shape drive connection increases strength over 50%.

High strength, tightly woven belt material holds up to the elements without fraying or puckering. Our 10' belt means you need to buy fewer posts today, and have to store fewer posts tomorrow.

Belt End & Lock Design



- ▶ Ergonomic shape with round edges increases product safety.
- ▶ Noticeable red slide action lock.
- ▶ Connects with all major competitor's stanchions.
- ▶ Double stitched belt loop improves durability.