



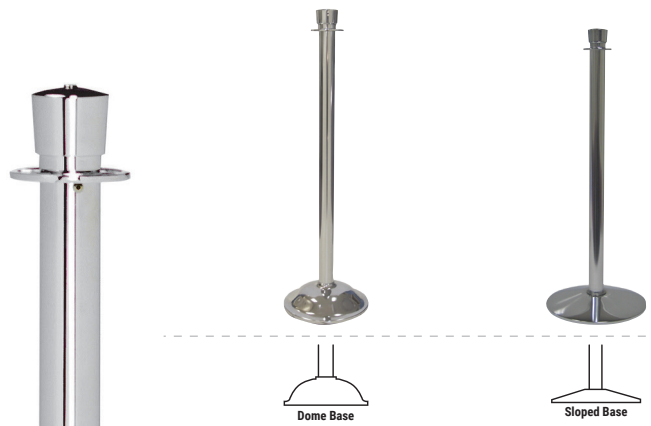
## Decorative post and ropes for that classic look and feel.

- ▶ Durable tie-rod construction for a premium quality post.
- ▶ Tightly woven, dense cotton core ropes create a graceful swag.
- ▶ Choose from five rope styles in dozens of options, and hundreds of post finishes.
- ▶ Ropes can be Dye-Sub printed for additional branding and advertising opportunities.
- ▶ Multiple mounting options to suit your environment.
- ▶ A true American classic, made from an American manufacturer.



# Post Options

## Urn Top Conventional Stanchions- ST400 Series



ST400D

ST400S

Height	39"	37"
Base Dia.	11.5"	14"
Weight	32 lbs.	25 lbs.
Stock Finishes	BA, PBA, PA, PC, SC	BA, PBA, PA, PC, SC, SS
Specialty Finishes	Class 1,2,3	Class 1,2,3

## Ball Top Conventional Stanchions - ST500 Series

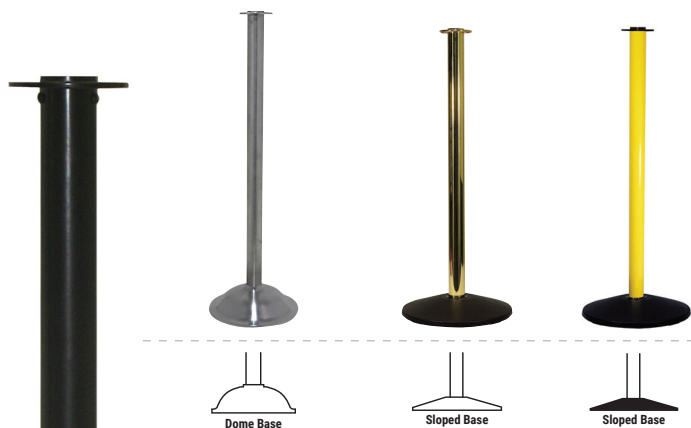


ST500D

ST500S

Height	42"	40"
Base Dia.	11.5"	14"
Weight	32 lbs.	25 lbs.
Stock Finishes	BA, PBA, PA, PC, SC	BA, PBA, PA, PC, SC, SS
Specialty Finishes	Class 1,2,3	Class 1,2,3

## Flat Top Conventional Stanchions- ST600 Series



ST600D

ST600S

ST601U

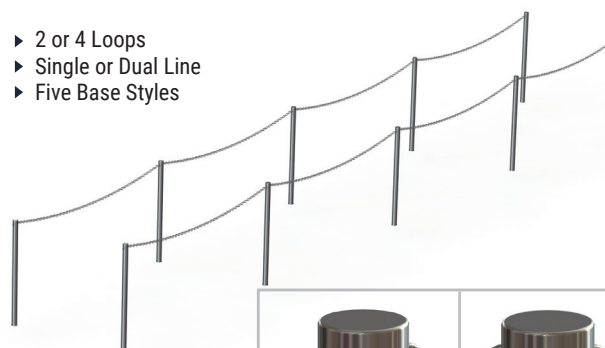
Height	36"	34"	34"
Base Dia.	11.5"	14"	14"
Weight	30 lbs.	23 lbs.	23 lbs.
Stock Finishes	BA, PBA, PA, PC, SC	BA, PBA, PA, PC, SC, SS	YA
Specialty Finishes	Class 1,2,3	Class 1,2,3	N/A

## Loop Post



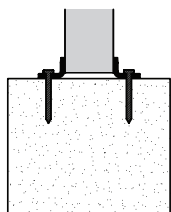
See our Loop Post flyer for a simple outdoor post. This stainless steel post is ideal for large outdoor queue lines such as at amusement parks. Recommended for use with chains or weatherproof ropes.

- ▶ 2 or 4 Loops
- ▶ Single or Dual Line
- ▶ Five Base Styles

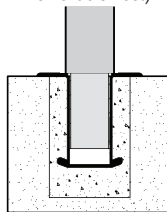


## Other Mounting Options For Conventional Posts

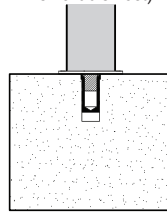
**FIXED**  
(Permanent Post)



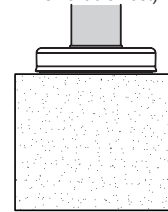
**REMOVABLE**  
(Permanent Socket, Removable Post)



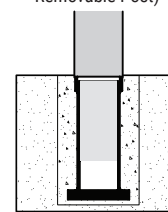
**MINI-SOCKET**  
(Permanent Socket, Removable Post)



**MAGNETIC**  
(Permanent Plate, Removable Post)



**SLIM-SOCKET**  
(Permanent Socket, Removable Post)



Height	36" - 42"	36" - 42"	36" - 40.25"	38.5" - 42.75"	This no-flange socket is available with the Loop Post only. Minimum quantities may apply. Loop Post is also available with a Sloped Base. See Loop Post flyer for more details.
Base Dia.	5"	2"	2"	6.25"	
Weight	10 - 12 lbs.	11 - 13 lbs.	10 - 12 lbs.	13 - 15 lbs.	
Stock Finishes	PC, SC, SS, SB	PC, SC, SS, SB	BA, PA, PBA, PC, SC, SS	BA, PA, PBA, PC, SC, SS	
Specialty Finishes	Class 1,2,3	Class 1,2,3	Class 1,2,3	Class 1 & 2	

## Rope Options & Accessories

Each rope is crafted per order and hand-wrapped in the highest quality materials of your choice. The plush coverings are wrapped and stitched around the tightly woven cotton core to provide an elegant swag between posts. Accent your ropes with durable snap or hook ends in your choice of finish to complete the classic look of your post and rope set.

**Signage:** easy to add. Top will be drilled and tapped for no charge when specified (excludes ball top).

**Forged ring:** Thick and strong, rounded for safety. Accepts 1.5" diameter ropes or chains with hook or snap ends.

**Ultra high quality ropes:** in your choice of cover or material, snap ends style and finish.

**Durable tie-rod construction:** full length center rod keeps tension between the post cap and base to ensure they will not loosen and fall apart over time.

**Heavy construction:** components will last for years and are highly resistant to denting.

**Rubber floor protectors:** standard with all bases.

**Velour:** Our classic, elegant velour is the standard at red carpet events.



**Naugahyde:** Durable, easy to maintain naugahyde is suitable for mild outdoor use and wipes clean when necessary. Ideal for sidewalks and outdoor food areas.



**Braided Polypropylene:** Suitable for outdoor use and other utilitarian purposes. This weatherproof "twisted plastic" rope is available in five colors.



\*Braided Polypropylene rope is 1-1/2" diameter, without a cotton core

**Microfiber:** Feel luxury on your fingertips with our new microfiber rope option. It's soft, strong, and easy to clean.



**Dye-Sub Microfiber:** Customize your ropes with hundreds of color options, as well as patterns, images and logos.

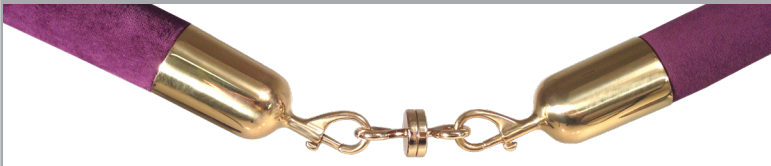


**Chains:** A durable and economical barrier between posts. Recommended for use with Stainless Steel Loop Posts.



### Wall Plates and Magnetic Breakaways

Magnetic breakaways allow for an easy exit in an emergency situation, as required by some fire codes.



Hook Ends have no closing mechanism.



Wall plates accept two ropes, eliminating the need for an additional post.



Stock Finishes <sup>1</sup>					
Finish	Black Aluminum	Yellow Aluminum	Polished Brass Aluminum	Polished Aluminum	Satin Stainless Steel
Order Code	<b>BA</b>	<b>YA</b>	<b>PBA</b>	<b>PA</b>	<b>SS</b>
Price	\$	\$	\$\$	\$\$	\$\$\$\$
Luster	N/A	N/A	***	***	****
Durability	***	***	***	***	*****
Post Top Material	Brass	Brass	Brass	Brass	Brass
Post Material	Aluminum	Aluminum	Aluminum	Aluminum	304 Stainless Steel <sup>2</sup>
Base Cover Material	Black ABS (Sloped) Steel (Others)	Black ABS	Brass (Dome) Steel (Others)	Steel	304 Stainless Steel <sup>2</sup>
Weather Resistant	(Sloped)				

1. Stock finishes are generally available for immediate delivery.  
2. Grade 304 Stainless Steel is a high strength, rust resistant alloy. BEWARE: Many low cost products use Grade 201 Stainless Steel is highly susceptible to rusting.

Specialty Finishes												
Class 1: Powder Coat over Steel Posts <sup>3</sup>												
Finish	Smooth Black	Wrinkle Black	Charcoal	Grey	White	Red	Green	Blue	Brown	Beige	Silver Vein	Gold Vein
Order Code	<b>SB</b>	<b>WB</b>	<b>CH</b>	<b>GR</b>	<b>WH</b>	<b>RD</b>	<b>GN</b>	<b>BL</b>	<b>BN</b>	<b>BG</b>	<b>SV</b>	<b>GV</b>
Price	\$\$\$	\$\$\$	\$\$\$	\$\$\$	\$\$\$	\$\$\$	\$\$\$	\$\$\$	\$\$\$	\$\$\$	\$\$\$	\$\$\$
Luster	N/A	N/A	N/A	N/A	N/A	N/A	N/A	N/A	N/A	N/A	N/A	N/A
Durability	****	****	****	****	****	****	****	****	****	****	****	****
Post Top Material	Brass	Brass	Brass	Brass	Brass	Brass	Brass	Brass	Brass	Brass	Brass	Brass
Post Material	Steel	Steel	Steel	Steel	Steel	Steel	Steel	Steel	Steel	Steel	Steel	Steel
Base Cover Material	Steel	Steel	Steel	Steel	Steel	Steel	Steel	Steel	Steel	Steel	Steel	Steel

Class 1: Powder Coat over Steel Posts <sup>3</sup>			Class 2: Plating over Steel <sup>4</sup>					Class 3: Solid Brass <sup>4,5,6</sup>		
Finish	Polished Chrome Plated	Satin Chrome Plated	Polished Brass Plated	Satin Brass Plated	Statuary Bronze Plated	Polished Brass w/ Clear Coat	Satin Brass w/ Clear Coat	Statuary Bronze w/ Clear Coat		
Order Code	<b>PC</b>	<b>SC</b>	<b>PB2</b>	<b>SB2</b>	<b>SBZ2</b>	<b>PB3</b>	<b>SB3</b>	<b>SBZ3</b>		
Price	\$\$\$	\$\$\$	\$\$\$\$	\$\$\$\$	\$\$\$\$	\$\$\$\$\$	\$\$\$\$\$	\$\$\$\$\$		
Luster	*****	*****	*****	*****	*****	*****	*****	*****		
Durability	****	****	****	****	****	*****	*****	*****		
Post Top Material	Brass	Brass	Brass	Brass	Brass	Brass	Brass	Brass		
Post Material	Steel	Steel	Steel	Steel	Steel	Brass	Brass	Brass		
Base Cover Material	Steel	Steel	Brass (Dome) Steel (Others)	Steel	Steel	Brass	Brass	Brass		
Weather Resistant										

3. Class 1 specialty finishes require a minimum order of 5 pieces and a 2-3 week lead time.  
4. Class 2 & 3 specialty finishes require a minimum order of 15 pieces and a 5-7 week lead time.  
5. Class 3 finishes require special clear coat for outdoor use. Additional charges apply.  
6. Solid brass products include a protective clear coat to prevent tarnishing. Also available without clear coat upon request.

**200+ RAL colors**  
Available at no additional cost.

Rope Options					
<b>Velour with Cotton Core - 841</b> Black BK Pearl Grey PG (PMS Cool Gray 9C) Beige BG (PMS 4725) Brown BN (PMS 497) Maroon MN (PMS 195)	Red RD (PMS 7427) Antique Gold AG (PMS 117) Hunter Green HG (PMS 350) Blue BL (PMS 282) Purple PL (PMS 518) Light Pink PK (PMS 197)	<b>Naugahyde with Cotton Core - 842</b> Black BK Blue BL (PMS 296) Red RD (PMS 195) Brown BN (PMS 497) Light Beige LB (PMS 7530)	<b>Braided Polypropylene - 843</b> Black BK Yellow YW (PMS 108) Coral Red <sup>7</sup> RD (PMS 187) Natural Hemp NH	<b>Microfiber 845</b> Merlot ML (PMS 209) White WH Light Green LG (PMS 5763) Ocean Blue OB (PMS 5415) Black BK	<b>Dye-sub Microfiber 845-DS</b> 
					<b>Chains</b> 1/8" Zinc Plated 851ZP 3/16" Pol. Stainless Steel - 852PS Custom coverings available. Minimums apply.

7. Coral Red is susceptible to fading.  
Due to printing limitations, colors shown may not represent actual product colors. Please call for samples if required.