

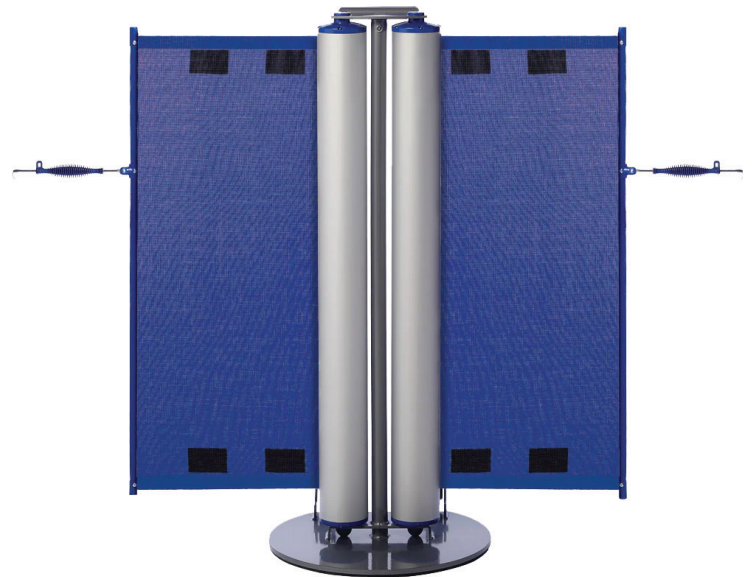


**RETRACTA-BANNER PRO**, a permanent or portable barrier system that enhances safety and offers customization and branding opportunities to improve your bottom line.

- ▶ Promotes safety, manage foot traffic, and define spaces.
- ▶ Create custom spaces with dynamic images and messaging.
- ▶ Easy setup and breakdown.



# Rolling Stanchions

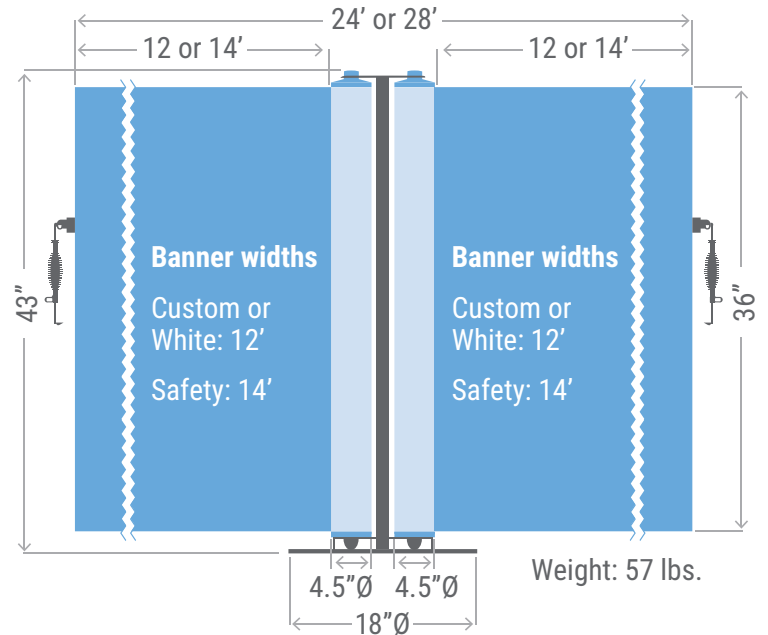
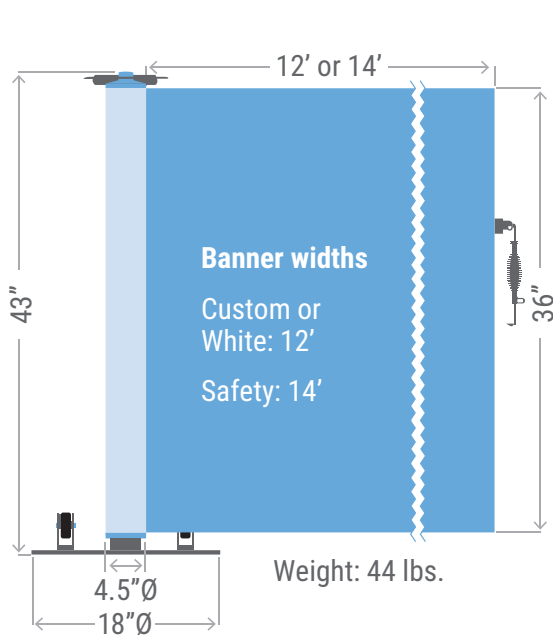


## Single Rolling Stanchion | MODEL RBNRP-SR

A single banner unit that has a width of 12 or 14 feet. Perfect for queue line perimeters, warehouse aisles and more.

## Dual Rolling Stanchion | MODEL RBNRP-DR

Comprised of two banners that has a span of 24 or 28 feet. Perfect for loading docs, maintenance areas and more.

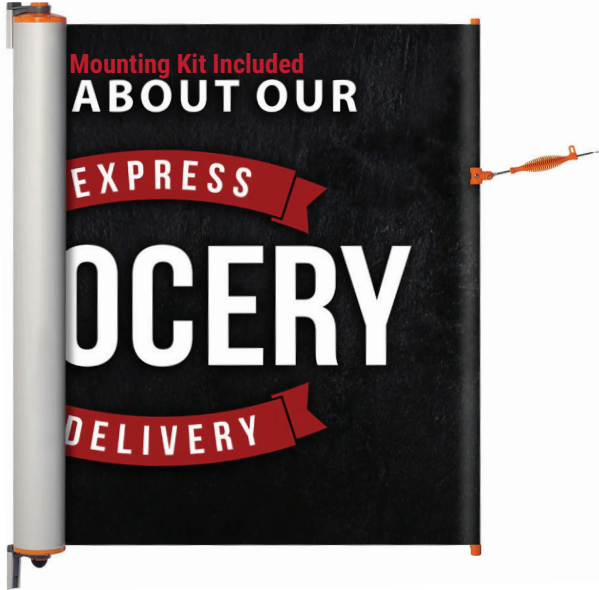


## Mobility with Ease

Rolling units come with convenient, built-in handles, built-in wheels and an ergonomic mobile design that makes transport effortless.



# Permanent & Portable



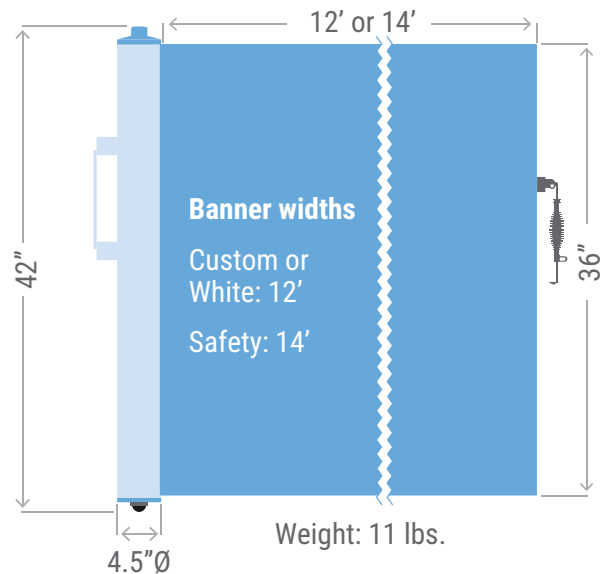
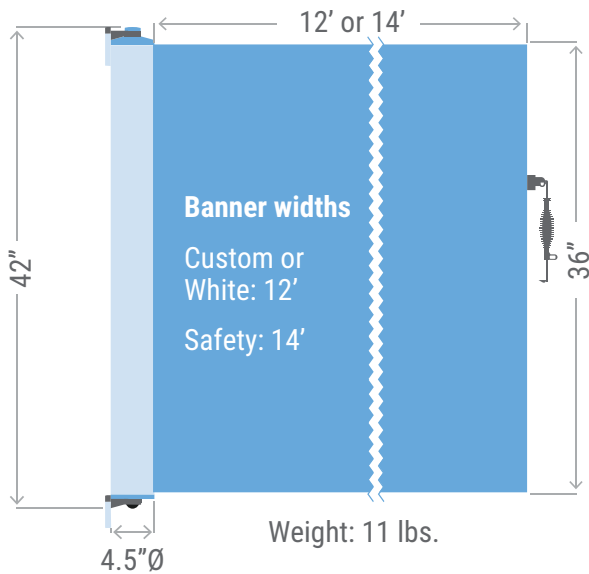
## Fixed Mount Unit | MODEL RBNRP-FM

Stays permanently in place and attaches to any standard racking system or wall providing convenient access.



## Portable Rack Mount Unit | MODEL RBNRP-RM

Attaches to any standard racking system and can be easily moved from location to location or removed and stored.



## Mounting Kit Included

Easily mounts to any wall or flat surface. Add additional mounting kits for use in multiple locations.



## No Tools Needed

For quick toolless attachment and removal from warehouse racking.



# Features & Options

## Features

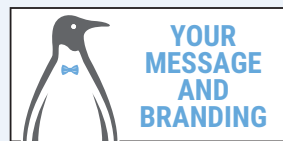
- **Ergonomic Mobile Design:** (Rolling Models Only)  
Unit can be easily rolled to any location and instantly deployed to block multiple openings.
- **Flexible Mesh Material for Safety Banners:**  
Open Mesh banner material is durable, waterproof, and fully flexible.
- **Vinyl Material for Custom & White Banners:**  
Durable, waterproof, UV protected, and fully flexible material.
- **90° Swivel:**  
Banner swivels to a 90 degree angle in either direction.

## Hardware Colors



Black, grey and white not available on safety models.

## Banner Colors



Custom  
1 Sided: CSS  
2 Sided: CSD



Safety  
Blue  
SBL



Safety  
Orange  
SOR



White  
WH

To order specify:

RBNRP — FM — BL — BL  
MODEL #      ROLLING/FIXED/PORTABLE      HARDWARE COLOR      BANNER COLOR

**Heavy-duty hook connects instantly to any stable area.**



## Accessories / Replacement Parts



### Attachment Stand:

If no connection area exists, no problem. Simply add one of our Attachment Stands.

Note: *The Attachment Stand works with banners 12 feet wide or less.*



### Fixed Unit Mounting Kit:

Included in this kit:

- 2 Break-away Brackets
- 4 Wood Screws
- 4 Sheet Metal Screws
- 4 Concrete Anchors



**Ready to begin?**

Contact a People Guidance Pro at **631-582-8600**